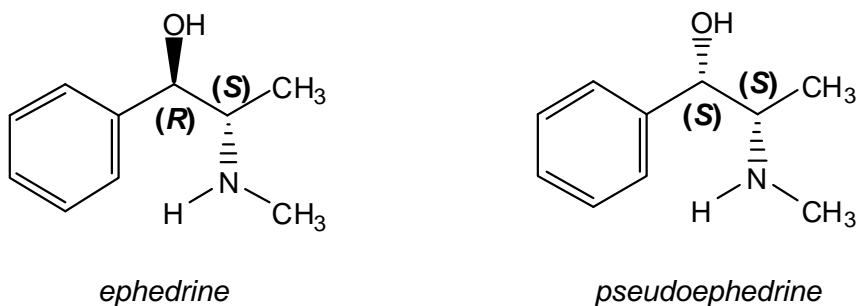


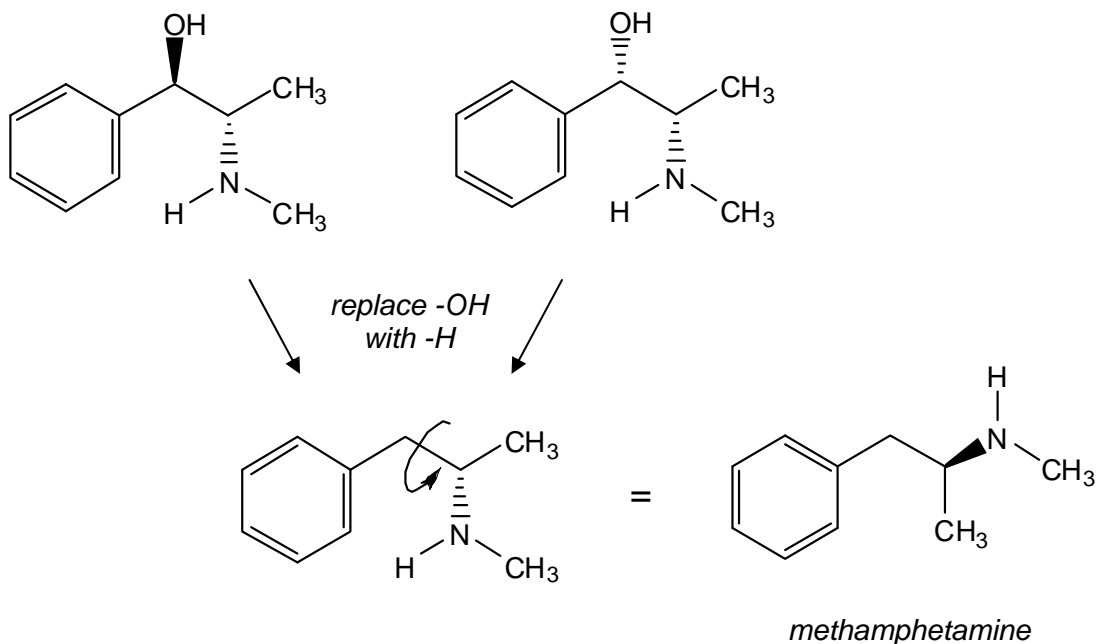
**Workshop 11 Solutions**  
**Enantiomers, Diastereomers, and Meth**

a)



These molecules are diastereomers. They are stereoisomers, both chiral, and not meso.

b) I think the easiest way to do this problem was to change the  $-OH$  groups to  $-H$ 's, redraw the molecules, and see what you got.



c) Levmetamphetamine and methamphetamine are enantiomers.