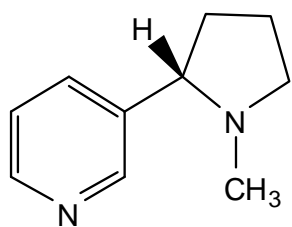
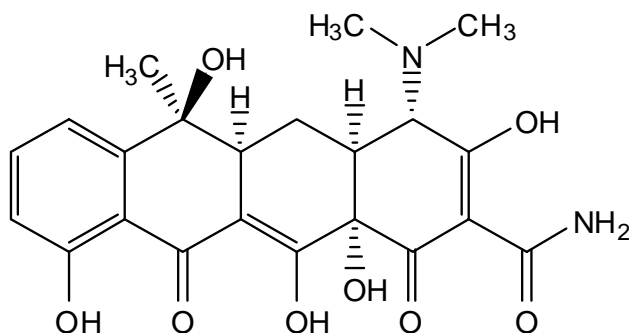


**Workshop 10**  
**Assigning (*R*) and (*S*) Stereochemistry**

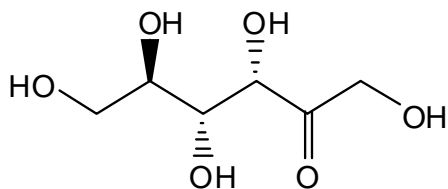
Find all of the stereocenters in the following molecules, and label each one (*R*) or (*S*) according to Cahn-Ingold-Prelog nomenclature rules.



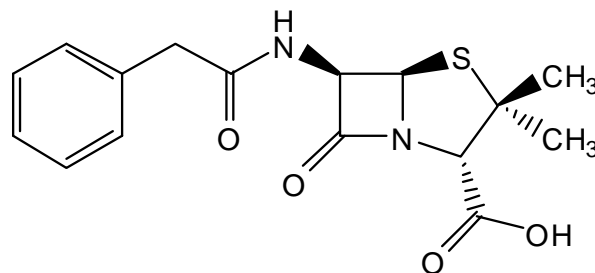
*nicotine*



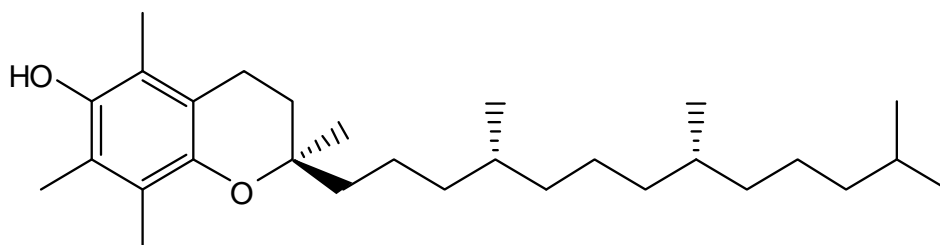
*tetracycline*



*D-fructose*



*penicillin*



*natural vitamin E*  
(synthetic material is mixture of 8 diastereomers)